

SERVICE LINE INVENTORY NOTICE

WE NEED YOUR HELP - TOGETHER WE CAN LOCATE THE LEAD SERVICE LINES!

The Northern Kentucky Water District needs your help identifying the type of pipe material used for your water service line. A water service line is the pipe that brings water from the water main into the building.

FOLLOW THESE 3 STEPS TO REPORT YOUR SERVICE LINE MATERIAL:

Step 1: Locate the water service line entering the building. The pipe may be visible where it enters through a basement wall. Take a picture of your water service line as it comes into your house (circled in red on the graphic on the right).

ENTRY WALL



Step 2: Use the information below to identify the type of pipe. Use a coin or key to carefully scratch the outside of the pipe. Use a strong refrigerator magnet.



LEAD

Outer Pipe Color: Dull gray
Scratch Test: Turns shiny silver
Magnet: Does not stick



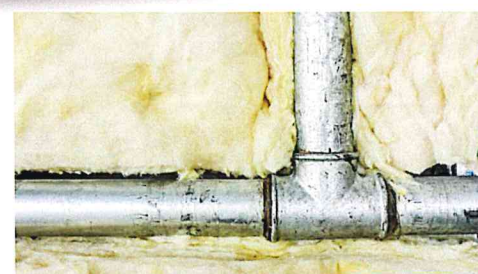
PLASTIC

Outer Pipe Color: May be black, red, blue or white
Scratch Test: No need to scratch
Magnet: Does not stick



COPPER

Outer Pipe Color: Brown and can turn green
Scratch Test: Looks like a penny
Magnet: Does not stick



GALVANIZED

Outer Pipe Color: Dark gray or black
Scratch Test: Hard to scratch and remains same color
Magnet: Magnet will stick

Step 3: Create an online account on LeadCAST to submit the form and your photos. If you do not have access to a computer or smart device, you can also call (859) 578-5451.

Scan the QR Code or visit: nkywater.info/leadcast

Information provided herein may be subject to disclosure under the Kentucky Open Records Act.

